



Tennessee's Calculation for School Letter Grades

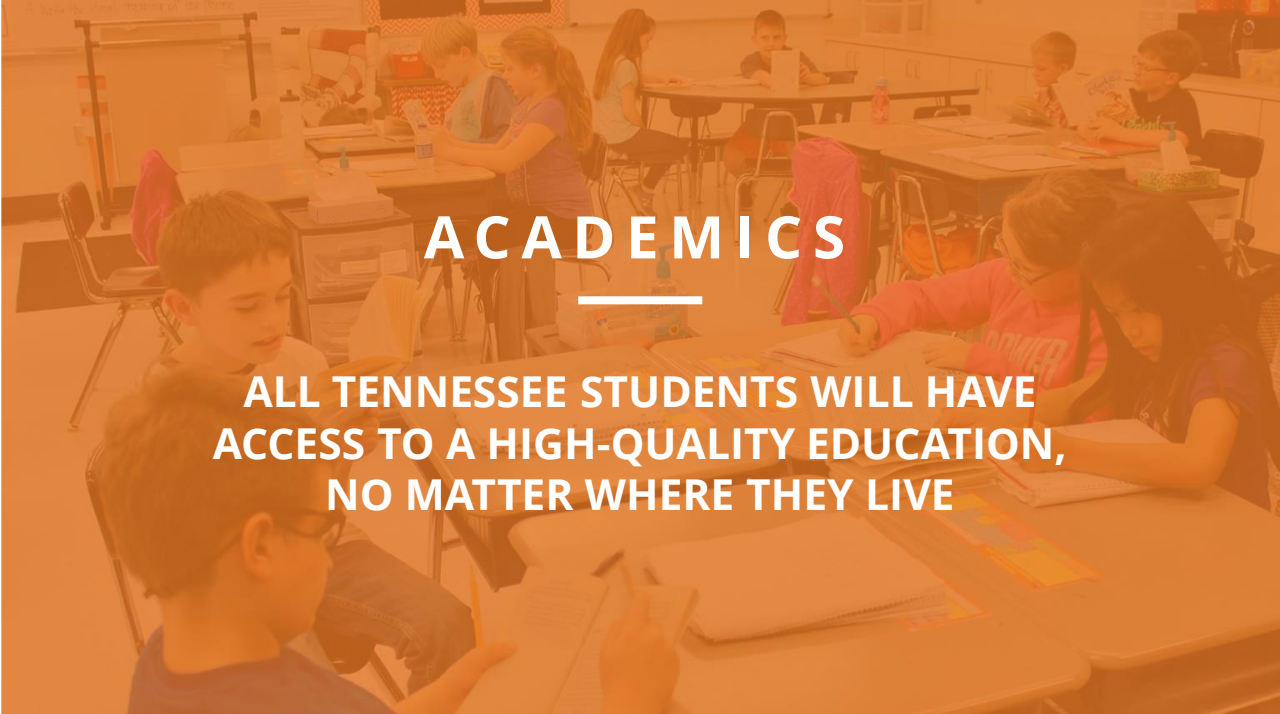
*Presentation for the State Board of Education
November 2, 2023*





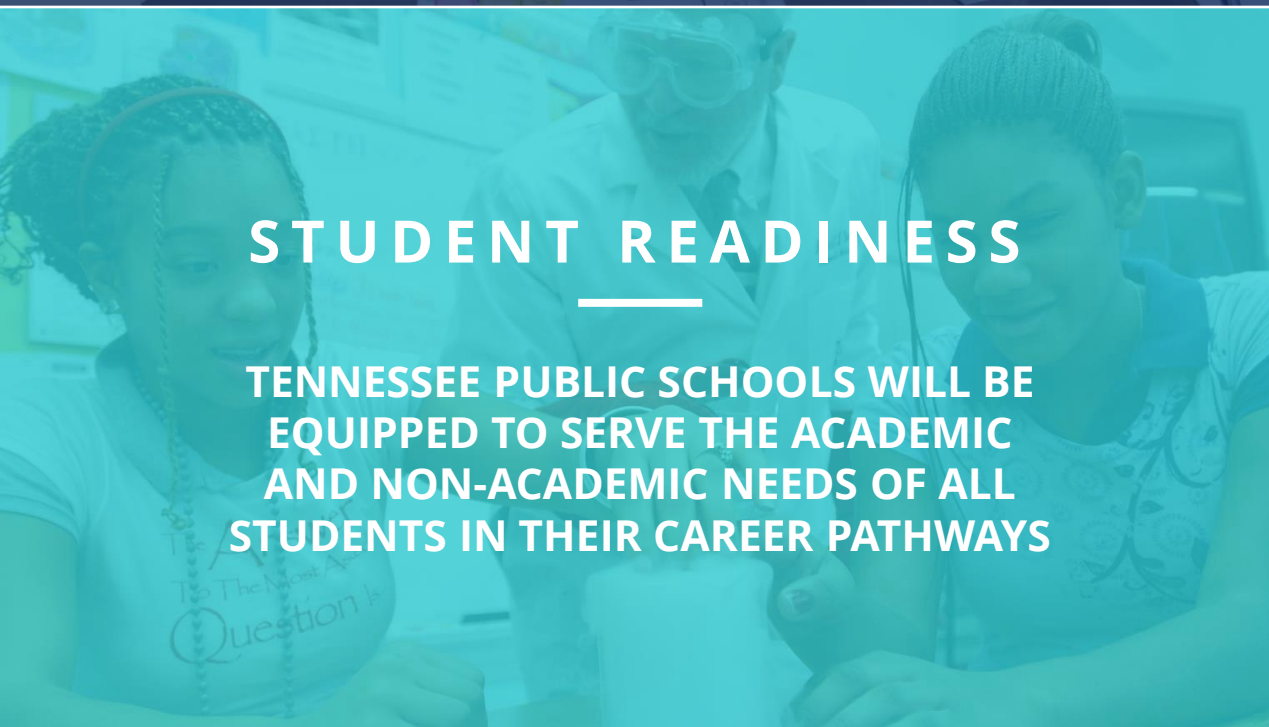
BEST FOR ALL

We will set all students on a path to success.



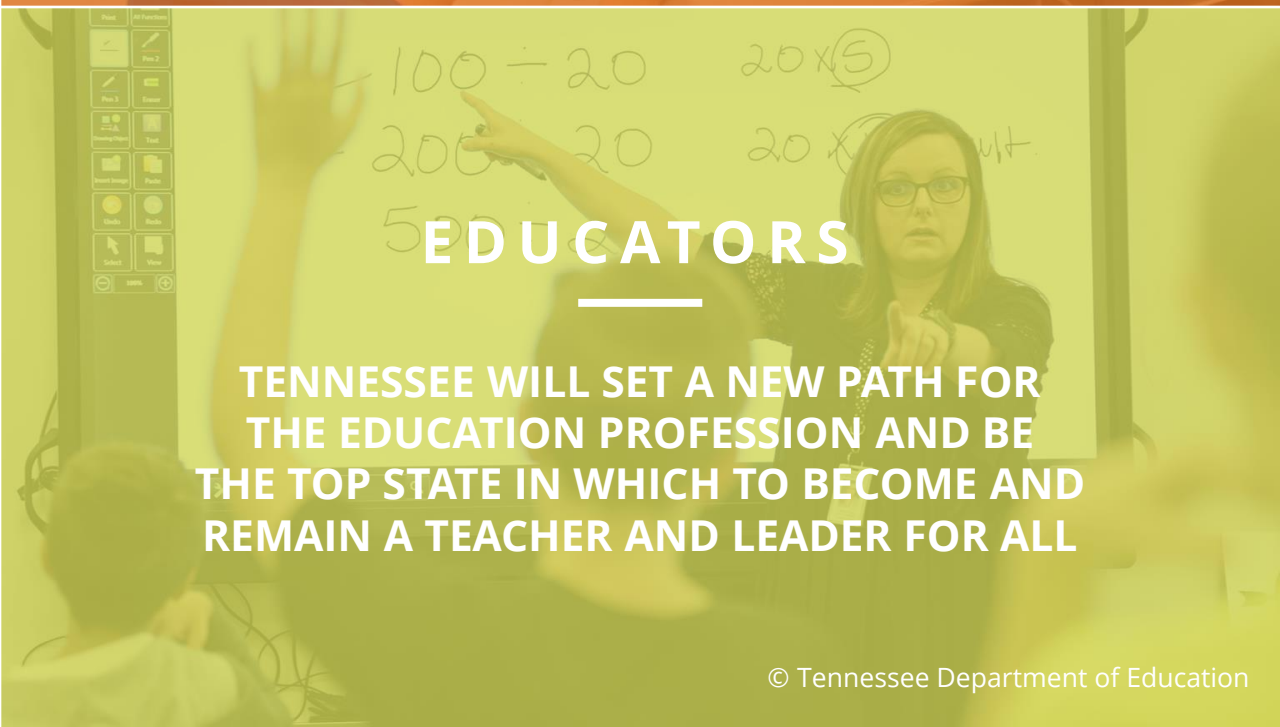
ACADEMICS

ALL TENNESSEE STUDENTS WILL HAVE ACCESS TO A HIGH-QUALITY EDUCATION, NO MATTER WHERE THEY LIVE



STUDENT READINESS

TENNESSEE PUBLIC SCHOOLS WILL BE EQUIPPED TO SERVE THE ACADEMIC AND NON-ACADEMIC NEEDS OF ALL STUDENTS IN THEIR CAREER PATHWAYS



EDUCATORS

TENNESSEE WILL SET A NEW PATH FOR THE EDUCATION PROFESSION AND BE THE TOP STATE IN WHICH TO BECOME AND REMAIN A TEACHER AND LEADER FOR ALL



Agenda

- Overview of Implementation
 - Law & History
 - TDOE Goals & Process for Implementation
 - Town Halls, Public Comment & A-F Working Group
- A-F Letter Grade Calculation
 - Indicators & Weighting
 - Aggregated Scores & Mapping
- Publishing A-F Letter Grades on State Report Card



Overview of Implementation

TDOE's Goals & Process for Implementation

- Produce school **ratings that are clear and meaningful to families** who already have expectations for **outcomes performance** as represented by a letter grade
- **Recognize accomplishments** in academic achievement, growth and any other indicators
- **Identify areas of need or opportunities** for improvement to support planning and investments at the local level

...all in partnership with Tennesseans across the state.

1. Public Town Halls

2. Public Comment

3. A-F Working Group

4. Calculation & Letter Grades



The A-F Working Group's task:

Develop a ***calculation***
to generate
A-F letter grades for schools

A-F Letter Grade Calculation



Letter Grade Model: Overview

- Indicators & Weights

Indicator	Elementary School Weight	Middle School Weight	High School Weight
Achievement (ACH)	50%	50%	50%
Growth (GTH)	40%	40%	30%
Subgroup - Lowest 25% (G25)	10%	10%	10%
College & Career Readiness (CCR)	-	-	10%

- Schools will receive a sub-score (Level 1-5) for each indicator within the calculation
- Level scores will be multiplied by assigned weights to generate aggregate score
- Aggregate score is cross-walked into a letter grade

Indicator 1: Achievement

- **Measure:** Proficiency Success Rate in TCAP and End of Course exams
- **Key Points**
 - All tested subjects are included
 - Subjects are weighted differently by grade band, reflective of tests offered, and with an emphasis on ELA and Math
 - Cut scores for Level 1-5 are derived from baseline data in 2022, allowing schools to demonstrate proficiency gains

Indicator	Elementary School Weight	Middle School Weight	High School Weight
English Language Arts (ELA)	40%	35%	Proportional Weighting by Tests Taken (3 MTH, 2 ELA, 1 SCI, 1 SS)
Math (MTH)	40%	35%	
Science (SCI)	20%	15%	
Social Studies (SS)	-	15%	





Indicator 1: Achievement, cont.

- **Special Considerations**

- US History & Biology: Districts may opt to include students taking advanced course work (e.g. AP, dual credit, etc.) in place of these EOCs provided the district maintains a 95% participation rate on the associated exam





Indicator 2: Growth

- **Measure:** Schoolwide TVAAS
- **Key Points**
 - All tested subjects and students are included
 - Leverages measure familiar to stakeholders
 - Maintain existing level descriptors
- **Special Considerations**
 - Continue to study and improve as needed the TVAAS calculation
 - Stability versus sensitivity





Indicator 3: Subgroup Performance

- **Measure:** TVAAS Growth of Lowest Performing 25% Student Subgroup
 - Students in this subgroup are identified based on prior year performance on TCAP
 - Leverages same TVAAS measure already in use
- **Key Points**
 - Includes all tested subjects
 - Mitigates the “double counting” of students
 - Does not presuppose who is lowest performing
- **Special Considerations**
 - Important to display other subgroup growth by student characteristic





Indicator 4: College & Career Readiness

- **Measure:** Percent of graduating cohort with one of the following:
 - ACT 21 or higher;
 - Postsecondary credit earning score on AP, IB, Cambridge, CLEP, Dual Credit, or Dual Enrollment;
 - Industry Credential (Tier III or Tier II plus one other industry credential);
 - ASVAB Qualifying Score;
- **Key Points**
 - Applies to high schools only
 - Ensures data included is from the same year of performance
 - Emphasizes attainment of credits/credentials toward post-secondary pursuits
- **Special Considerations**
 - Requires district data verification window





Aggregating Scores & Mapping the Letter Grade

- Schools will receive a sub-score (Level 1-5) for each indicator within the calculation
- Level scores will be multiplied by assigned weights to generate aggregate score
- Aggregate score is cross-walked into a letter grade

1. Determine Aggregate Score Grade

Indicator	Level	Weight	Score
ACH	X	%	
GTH	X	%	
G25	X	%	
CCR	X	%	
Aggregate Score			

2. Map Aggregate Score to Letter Grade

Letter Grade	Aggregate Score Range
A	4.5 – 5
B	3.5 – 4.5
C	2.6 – 3.5
D	1.6 – 2.5
F	1 – 1.5



Publishing A-F Letter Grades on the State Report Card

State Report Card: **OLD** Navigation Menu

SCHOOL'S NAME

District: [Redacted] | District Website: [Redacted] | Grades Served: [Redacted]

SCHOOL WEBSITE: [Redacted]

ADDRESS: [Redacted]

PHONE: [Redacted]

Achievement | Growth | Chronically Out of School | English Language Proficiency Assessment (ELPA)

Staff | Finance | About This School

This is where the w

E-MAIL PRINCIPAL



State Report Card: **NEW** Navigation Menu

SCHOOL'S NAME

District: [REDACTED]

District Website: [REDACTED]

Grades Served: [REDACTED]

SCHOOL WEBSITE:

[REDACTED]

ADDRESS:

[REDACTED]

PHONE:

[REDACTED]

- [REDACTED] School Letter Grade
- [REDACTED] State Achievement Rate [^]
 - Overall State Achievement Rate
 - State Achievement Rate by Subject Area
- Growth
- Federal Performance Metrics [^]
 - Federal Success Rate [▾]
 - Chronically Out of School
 - Discipline
 - English Language Proficiency Assessment (ELPA)

About This School

PRINCIPAL



Report Card Wireframe: Letter Grade Page

School Letter Grades
 State Achievement Rate v
 Growth
 Federal Performance Metrics v

School Letter Grades

Indicators	Achievement	Growth	Subgroup	College & Career
	LEVEL 1-5	LEVEL 1-5	LEVEL 1-5	LEVEL 1-5
Measure	Success Rate	Schoolwide TVAAS	Lowest Performing 25%	College & Career Readiness
Overall Scores- by Subject	<ul style="list-style-type: none"> • ELA- Score • Math- Score • Science- Score • Social Studies- Score <p style="text-align: center;">[Explore More]</p>	<ul style="list-style-type: none"> • Literacy- Score • Numeracy- Score <p style="text-align: center;">[Explore More]</p>	<ul style="list-style-type: none"> • ACT 21+- Score • AP/IB/Cambridge/Etc. - Score • Industry Certifications- Score • ASVAB- Score <p style="text-align: center;">[Explore More]</p>	
Overall Scores- by Student Subgroup	<ul style="list-style-type: none"> • Economically Disadvantaged- Score • English Learners- Score • Students with Disabilities- Score <p style="text-align: center;">[Explore More]</p>	<ul style="list-style-type: none"> • Economically Disadvantaged- Score • English Learners- Score • Students with Disabilities- Score <p style="text-align: center;">[Explore More]</p>	<ul style="list-style-type: none"> • Economically Disadvantaged- Score • English Learners- Score • Students with Disabilities- Score <p style="text-align: center;">[Explore More]</p>	

Calculation of School Letter Grade

Indicator	Level	Weight	Score
ACH	X	%	Y
GTH	X	%	Y
G25	X	%	Y
CCR	X	%	Y
Aggregate Score			Z

School Letter Grade:

A

Statewide Letter Grade Scale

Grade	Aggregate Score Range
A	4.5 - 5.0
B	3.5- 4.4
C	2.6- 3.4
D	1.6- 2.5
F	1.0- 1.5



Next Steps

- **November:**
 - Data verification with districts
- **December:**
 - District preview window
 - Publication of the State Report Card





Thank You!

Permission is granted to use and copy these materials for non-commercial educational purposes with attribution credit to the "Tennessee Department of Education". If you wish to use these materials for reasons other than non-commercial educational purposes, please contact Joanna Collins (Joanna.Collins@tn.gov).